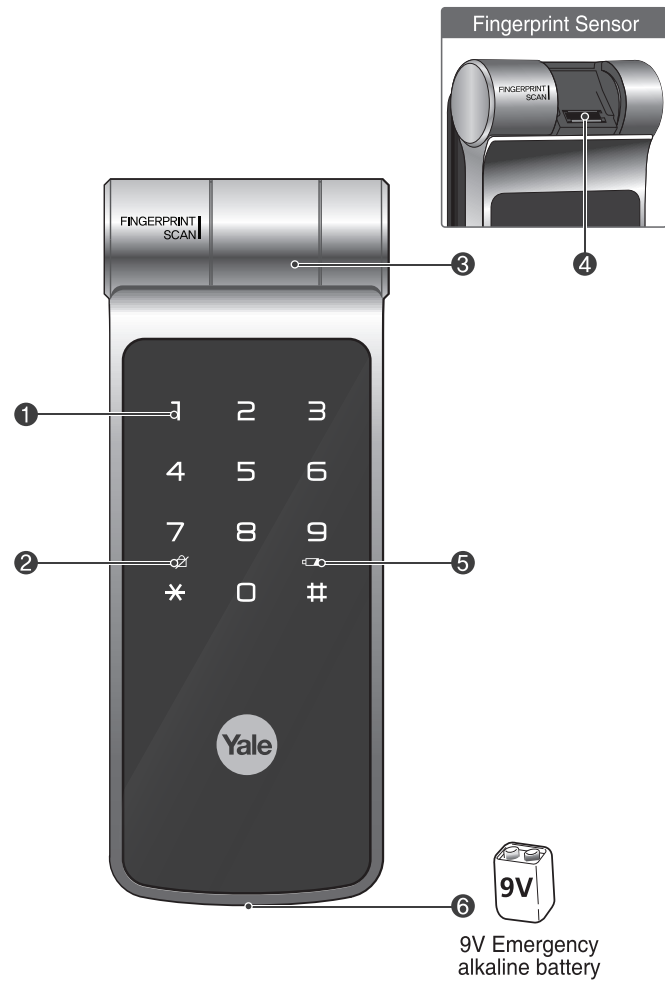
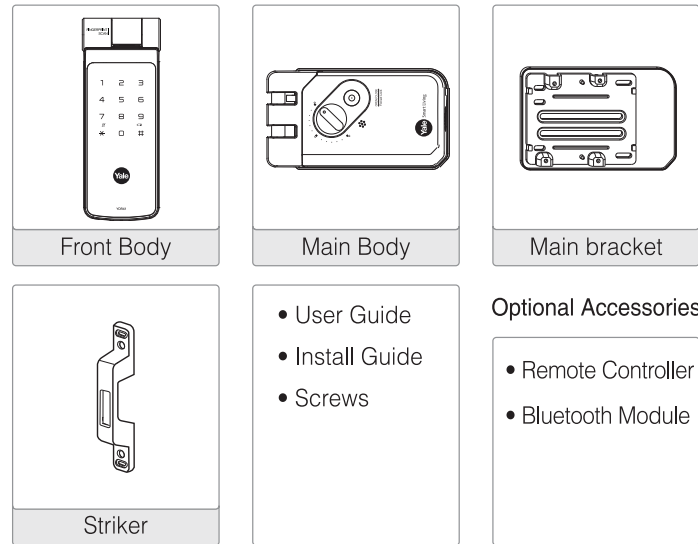


## 1. Front Body (Front Body, installation on the outside of the door)



## 2. Basic Contents

### Basic Contents

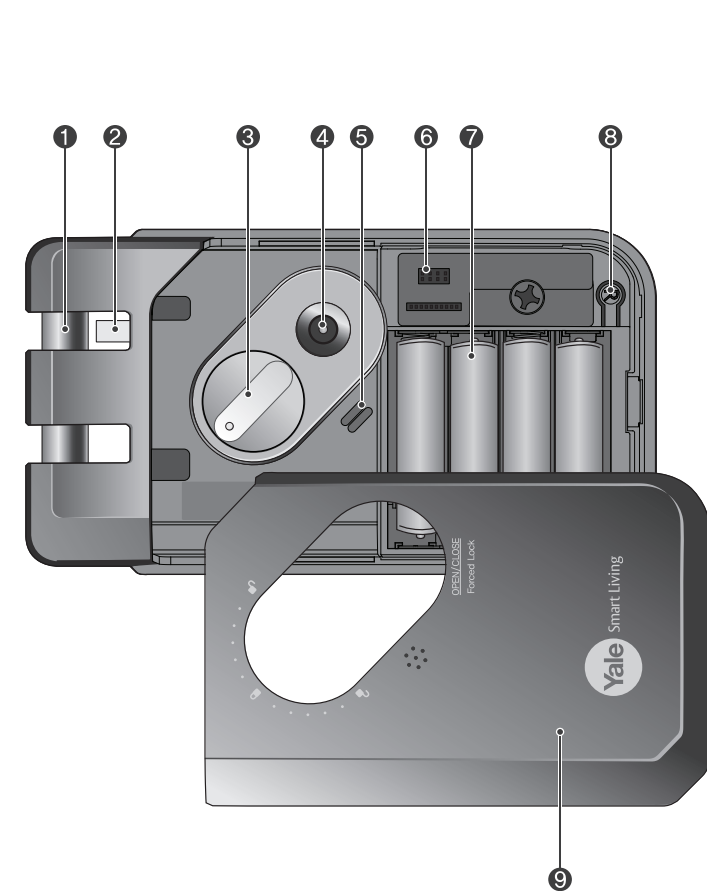


## 3. Specifications

Parts	Specifications	Remarks	
Front Body	64,6(W) X 160,5(H) X 20(D)mm Die-Casting	Operating temperature: -15~55°C (5~131°F)	
Main Body	162,2(W) X 87(H) X 35(D)mm Die-Casting		
Type of Product	Direct current, Temperature Sensor, Not fire resistant, Key is not available, Deadbolt type door lock (D-NF-T-NK-S)		
Option	Remote Control	Wireless	Optional
	Bluetooth Module	Wireless security system	Optional

※ Battery life may vary depending on temperature, moisture levels, frequency of use and the quality of the batteries.  
 ※ Please make sure that all parts are included when purchasing the product.  
 ※ Optional products may not be available depending on your country or local dealer.

## 4. Main Body (Main Body, installation on the inside of the door)



## 5. Front Body

1 Keypad(10-key)	2 Deadbolt Jam Lamb
3 Fingerprint Cover	4 Fingerprint Sensor
5 Emergency Power Supply Terminal	

## 6. Main Body

1 Dead Bolt	2 Automatic Locking Sensor
3 Thumb Turn Lock	4 Double Open/Close Button
5 Speaker	6 Slot for Remote Control module
7 1.5V AA Alkaline Batteries	8 (R)Registration Button
9 Battery Cover	

## 7. Setting Menu

	Touch the Keypad of the Front Body with your palm to begin.
	Press <b>*</b> button on the Keypad.
	Press <b>#</b> button on the Keypad.
	Press <b>(R)</b> (Registration) button in every steps to start or complete the session.
	Enter User Fingerprint. (Up to 20EA)
	Enter User Code. (4 ~ 10 digits) The User code is used for unlocking the lock. (Up to 30)
	Enter Master Code. (4 ~ 10 digits) The Master code is managed by certain person who is in charge of controlling the lock, and used for setting up the features.
	Enter Visitor Code. (Only 4 digits) The Visitor code is different from user code and given out to visitors only.
	Enter Onetime Code. (Only 4 digits) The Onetime code is used only once for unlocking the door lock and automatically deleted after usage.
	User Slot Number should be 2 digits. (like '01', '02'...) When registering group of users in advanced mode, the User Slot Number is used to variate individuals and offer private pin codes.
	Rotation area to add more feature when enter <b>*</b> button.

## 8. Product Features

**Easy Scan (Patent)** .....  
 Easy User Interface of using finger print scanning type by Sliding up the fingerprint cover and swipe down.

**Normal Mode** .....  
 Without a designated person, anyone who knows 'User PIN Code' has authority to set features.

**Master Mode** .....  
 Only a designated person who knows 'Master PIN Code' has authority to set features.

**3minute Lock Out Feature** .....  
 After five(5) unsuccessful attempts at entering a invalid code or Fingerprint 3minute Lock Out mode will be activated.

**Smart Etiquette** .....  
 To enter pin codes on the keypad and open the door lock in silent mode.

**Network Module Setting (\*Optional)** .....  
 This setting becomes available through the Main Menu (9) and allows the lock to connect with the Controllers.

**Automatic Lock** .....  
 When the door lock is set on Automatic Lock mode, it will be locked automatically.

**Manual Lock** .....  
 When the door lock is set on Manual Lock mode, it should be operated manually.

## 9. Quick Menu (Normal Mode) - Default Mode

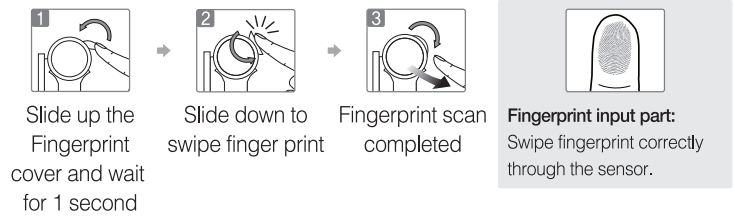
Without a designated person, anyone who knows 'User PIN Code' has authority to set features.

User Code		*Continue / (R) Complete											
		1	2	3	4	5	6	7	8	9	10	11	12
Registr -ation	(R) (U) (R)												
Fingerprint Up to 20EA													
Registr -ation	(R) *												
Visitor Code													
Registr -ation	(U) (R) 1 #												
Delete													
Onetime Code Auto delete after using.													
Registr -ation	(U) (R) 2 #												
Delete													
Delete All Fingerprint													
Delete	(U) (R) 3 #												
DoorLock Setting													
Change Mode	(U) (R) 4 #												
Automatic Lock Setting													
Registr -ation	(U) (R) 4 #												
Delete													

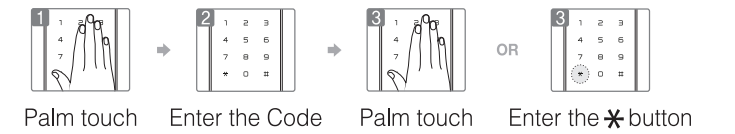
Volume Setting													
High													
Low	(U) (R) 4 #												
Mute													
Doorlock Setting - Double Open/Close button setting													
Registr -ation	(U) (R) 4 #												
Delete													
Doorlock Setting - Language setting													
Korean													
Chinese	(U) (R) 4 #												
English													
Taiwanese													
Remote Controller													
Registr -ation	(U) (R) 8 #												
Delete													
Controller													
Registr -ation	(U) (R) 9 #												
Delete													

※ When changing from Normal to Master mode, all of the previously registered PIN codes and other credential will be automatically deleted.

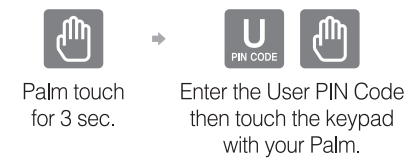
## 10. Unlocking Door with Fingerprint



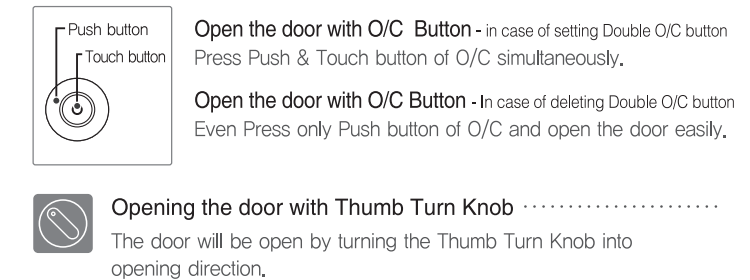
## 11. Unlocking Door with Code



## 12. Unlocking Door with Smart Etiquette.



## 13. Unlocking the door from inside



## 14. Locking the door

